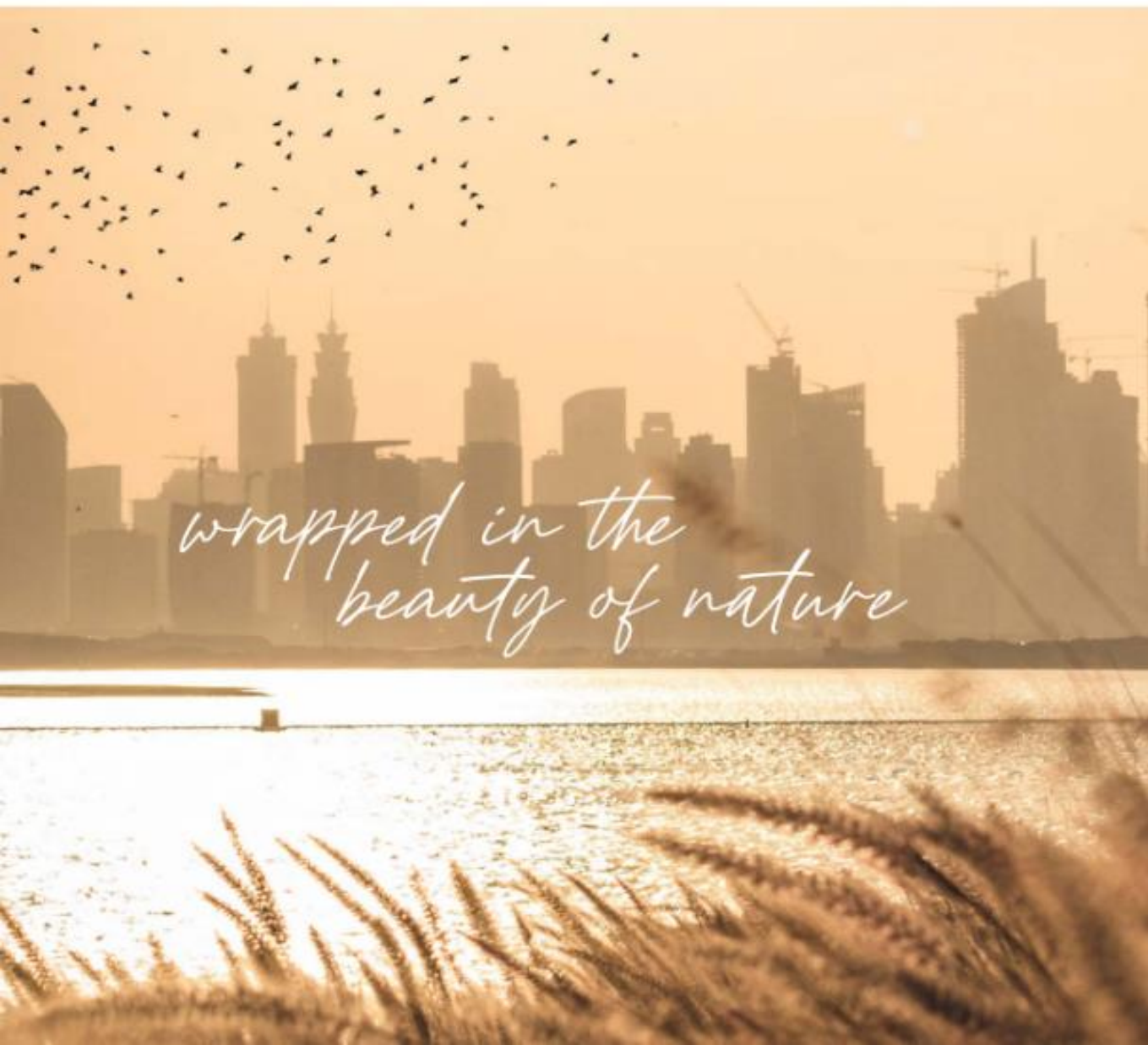




**Completion Date 2027**

**NAYA**  
AT DISTRICT ONE

# The Location:



*wrapped in the  
beauty of nature*



4 KM

Downtown Dubai

---



15 MIN

Burj Al Arab

---



20 MIN

Dubai International Airport

---



2 MIN

Meydan Racecourse

---

A mere 4 kilometers from Downtown Dubai, Naya is only minutes from the Meydan Racecourse, 15 minutes to the renowned Burj al Arab, and 20 minutes to the Dubai International Airport. Despite being in the heart of this bustling metropolis, Naya at District One feels worlds away, wrapped in the greenery of nature and the clear blue of the lagoon.

# The type of units:

Naya District One by Nakheel caters to various lifestyles with its thoughtfully designed residences. Offering a range of options from cosy 710 sq. ft. 1-bedroom apartments to expansive 4-bedroom havens boasting 4,500 sq. ft. of space, there's something for everyone. Families will find comfort in the spacious 3-bedroom apartments reaching 1,970 sq.ft., while those seeking an unparalleled luxury experience can secure one of the limited-edition 4-bedroom masterpieces. Naya even offers the option of 3-bedroom ground floor villas measuring 3,540 sq.ft., perfect for those who desire a villa lifestyle within this vibrant community.



# The amenities:



SPRAWLING GREEN SPACES



OVERLOOKING CRYSTAL LAGOON



DIRECT ACCESS TO THE CRYSTAL LAGOON AND ITS BEACH



INFINITY POOL



ROOFTOP LOUNGE WITH A TERRACE IN TOWER 1



FITNESS CENTER



SHADED KIDS POOL AND PLAYGROUNDS

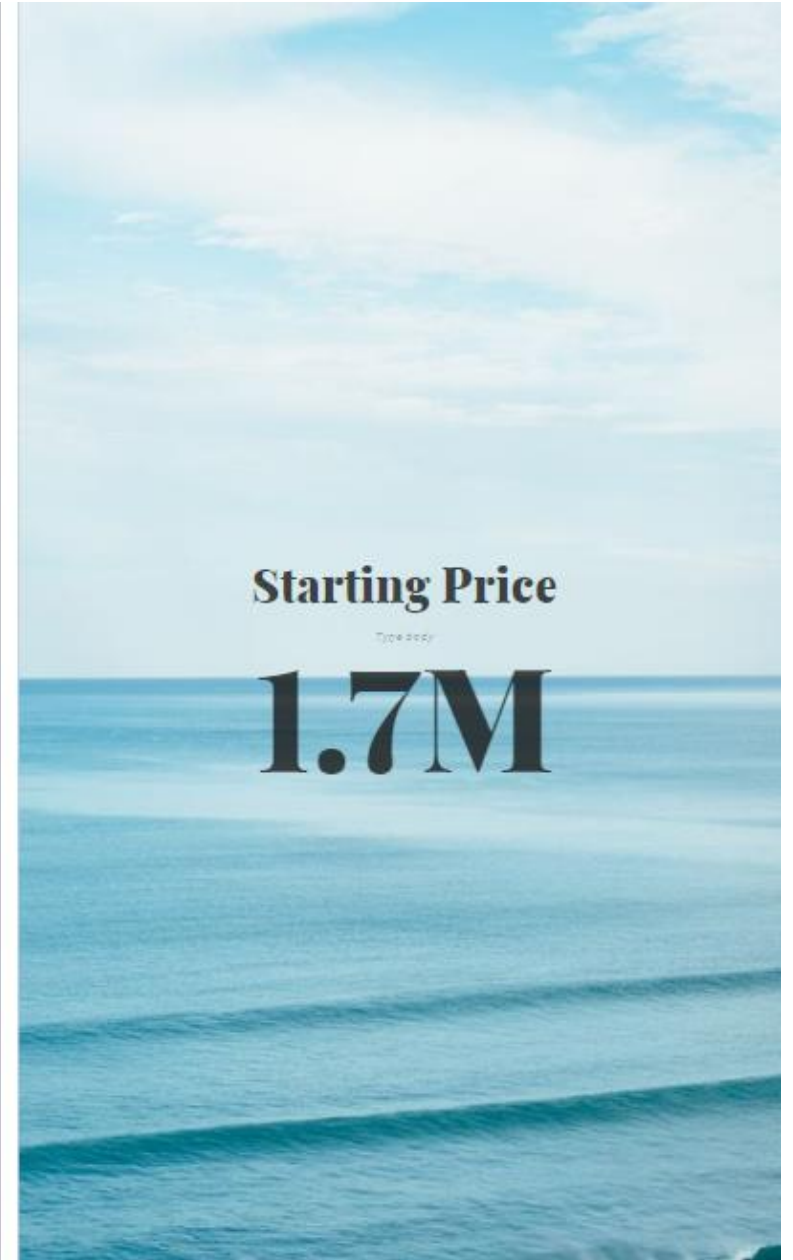


SPORTS COURT

**Floors**  
**19**

**Size**  
Type body  
**710Sqft**  
**To**  
**3541Sqft**

**Starting Price**  
Type body  
**1.7M**



# Payment Plan

Installment	Payment (%)	Milestone
Down Payment	20%	On Booking Date
1st Installment	10%	Within 30 days from booking date
2nd Installment	10%	Within 7 months from booking date
3rd Installment	10%	Within 13 months from booking date
4th Installment	10%	Within 19 months from booking date
5th Installment	10%	Within 25 months from booking date
6th Installment	10%	Within 31 months from booking date
Final Installment	20%	On Completion & Handover